

Career and Employment Services

Guiding You from College to Career

Kansas State University

CES Employer Advisory Board

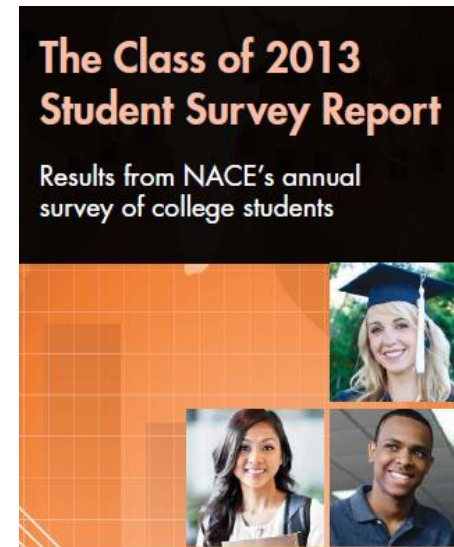


Welcome to today's virtual meeting.....

- The telephone access number is **785-395-0828**
- Access Code: 1691#
- Please MUTE your phone using *6
- We will begin in just a few minutes
- If you are having any **technical problems**, call 785-532-1691.

Today's Agenda

- 10:00-10:30am** Welcome and introductions
- 10:30-10:45am** Highlights from Fall 2013
- 10:45-11:00am** What's ahead for 2014
- 11:00-11:45am** Webinar presentation
Student Attitudes and Expectations
Ed Koc, Director of Research, NACE
- 11:45-12:00pm** Wrap-up

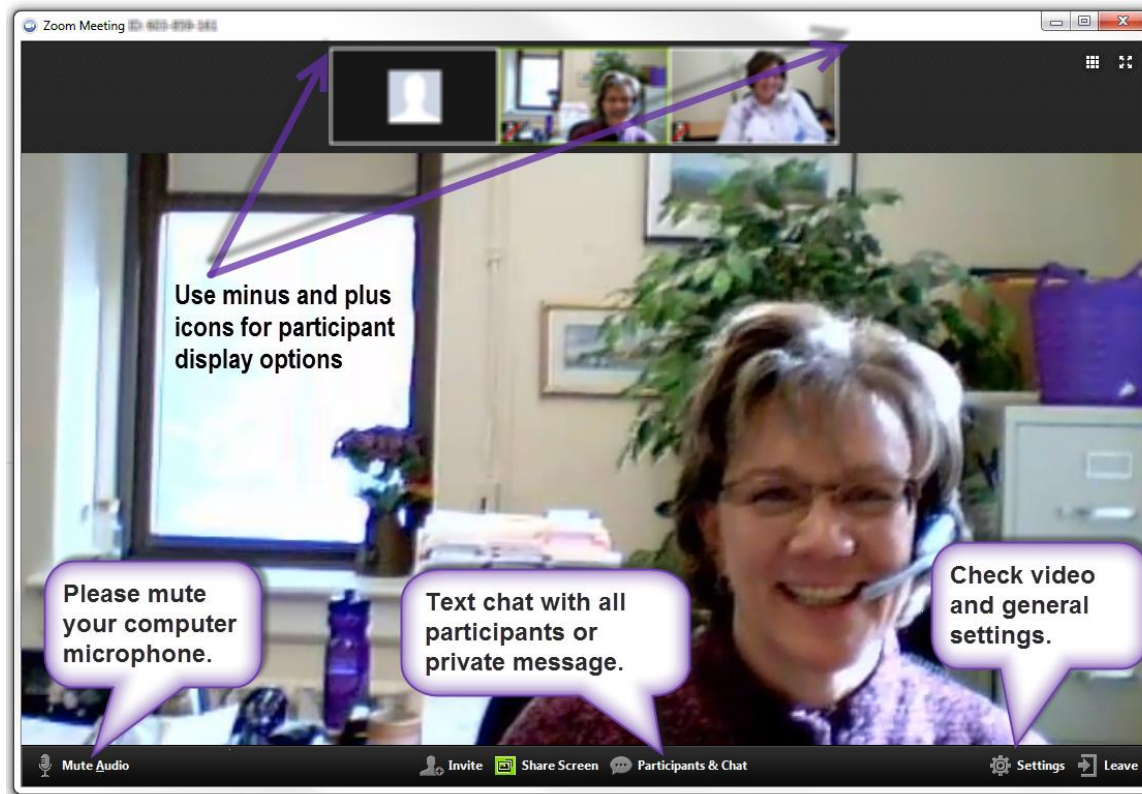


Introductory Poll

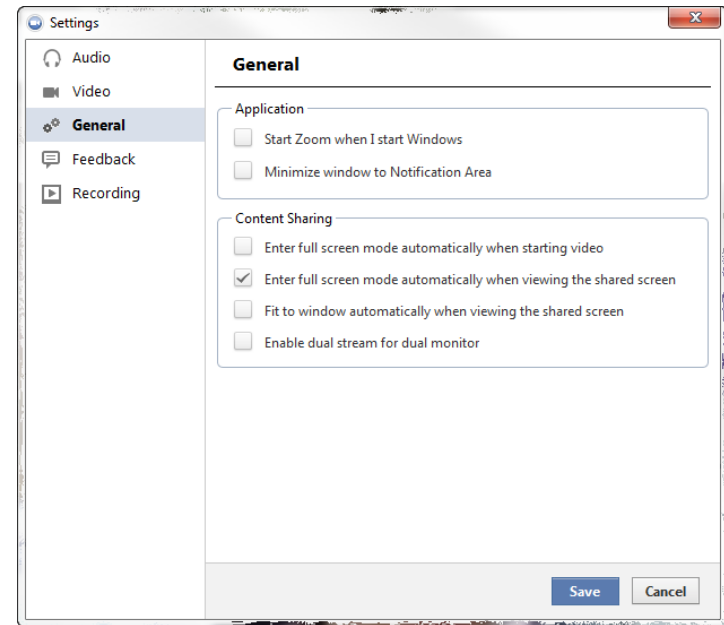
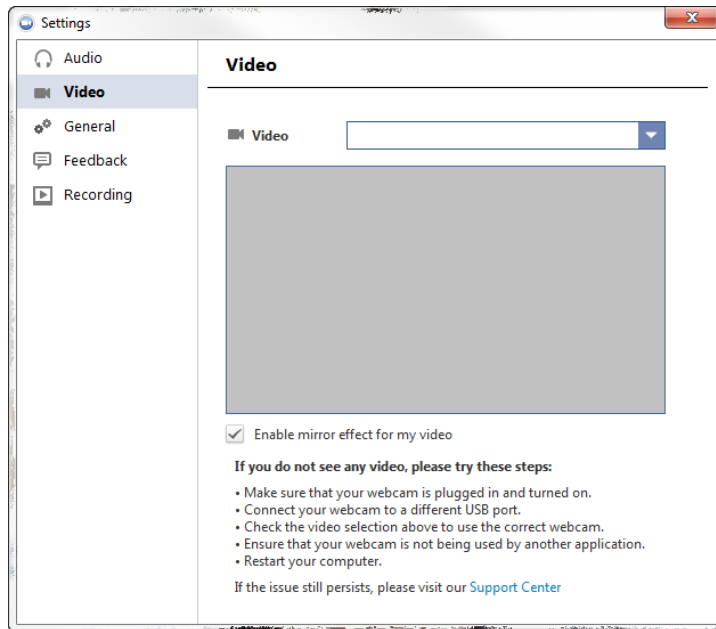


What is the farthest location
you have traveled to within the last year?

Webinar Toolbar



Settings



Employer Attendees

As of 1/7/14

First Name	Last Name	Title	Company	City	State
Marcie	Oppold	HR Manager	Archers Daniels Midland	Overland Park	KS
Kyri	Gorges	College Relations Manager	Black & Veatch	Overland Park	KS
Neelam	Patel	College Recruiter	Black & Veatch	Overland Park,	KS
Katrina	Bucknall	Staffing Specialist	BNSF Railway	Fort Worth	TX
Julie	Hoch	College Recruiting Specialist	Burns & McDonnell	Kansas City	MO
Josh	Ligon	University Recruiting Program Lead	Cargill	Hopkins	MN
Jaclyn	Hains	Campus Recruiter	Cerner Corporation	Kansas City	MO
Kriste	Weber	Mgr, Talent Acquisition	Cessna	Wichita	KS
Rick	Kinder	Plant Manager - Orange, TX Plant	Chevron Phillips Chemical Company LP	Orange	TX
Tara	Greskoviak	Director of Human Resources	CivicPlus	Manhattan	KS
Darbi	Alstrom	Advisor, University Relations	ConocoPhillips	Bartlesville	OK
Becky	Burnau	Talent Acquisition Specialist	Enterprise	Merriam	KS
James	Oaks	Talent Acquisition Manager	Enterprise Holdings	Joplin	MO
Melissa	Meurer	Recruiter	Farmers Insurance	OLATHE	KS
Emily	Reif	Supervisor	Farmers Insurance	Olathe	KS
Kellie	Wilson	HR - Generalist	Frontier Farm Credit	Manhattan	KS
Nikki	Thomas	College Relations Recruiter	Garmin International	Olathe	KS
Mallory	Ayers	HR Business Partner	GTM Sportswear	Manhattan	KS
Darci	Moore	VP of HR	GTM Sportswear	Manhattan	KS
Connie	Pfaff-Eickhoff	Talent Acquisition Specialist	GTM Sportswear, Inc.	Manhattan	KS
Joyce	Mahoney	Vice President	Intermark	Kansas City	MO
Jesse	Brown	Analyst	Koch	Wichita	KS
Jenna	Stutz	Accountant	Koch Industries	Wichita	KS
Shannon	Vance	Human Resource Manager	K-Tron Salina	Salina	KS
Aleisha	Zigrang	HR Consultant	ONEOK Inc	Tulsa	OK
Ashley	Smith	Recruiter; On-Campus Recruitment	ONEOK, Inc	Tulsa	OK
Hollie	Becker	Manager, University Relations	Payless ShoeSource	Topeka	KS
Lucy	McGilley	Campus Program Manager	Perceptive Software	Shawnee	KS
Kristy	Scheffelmaer	Campus Relations Coordinator	Perceptive Software	Olathe	KS
Samuel	Paden	Advisor, University Relations	Phillips 66	Bartlesville	OK
Julie	Anderson	Univ Recruitment Prog Mgr	Sprint	Overland Park	KS
Julie	Burkhart	Recruiting Manager	Sprint	Overland Park	KS
Keri	Westland	Talent Acquisition Specialist, Officer	State Street	KC	MO
Steven	Green	Talent Acquisition Manager, VP	State Street Corporation	Kansas City	MO
Jennifer	Ball	Sr. Recruitment Manager	Union Pacific Railroad	Kansas City	MO
Larry	Doll	Director of HR	USD 383	Manhattan	KS
Bridget	Seemann	Director of HR	USD 475	Junction City	KS

Introductory Poll



What is the farthest location you have visited within the last year?



K-State Attendees



Angela Hayes, CES Asst Dir, Grad Students & Alumni

angelagh@ksu.edu

Anthony YBarra, Employer Relations Coordinator

anthonyy@ksu.edu

Jared Meitler, CES Career Development Coordinator

jmeitler@ksu.edu

LaToya Farris, CES Asst Dir, Arts & Sciences

latoyaf@ksu.edu

Leah Adeniji, CES Asst Dir, Engineering

ladeniji@ksu.edu

Mary Ellen Barkley, CES Asst Dir, Agriculture & Vet Med

mebark@ksu.edu

Pat Hudgins, Assoc Dir, Education

phudgins@ksu.edu

Savannah Nulton, CES Asst Dir, Business

smn09@ksu.edu

Kerri Day Keller, CES Director

kdkeller@ksu.edu

Mitzi Richards, Sr Director of Corporate Relations

mitzir@found.ksu.edu

Richard Potter, Director, Corporate Engagement

rpotter@ksu.edu



CES by the Numbers...

4.6.....Student rating of career advising (5.0)

6.....CES affiliated Career Fairs

92.....% of graduates employed or enrolled in
additional education six months out

433.....Presentations for students

557.....Employers recruiting on campus

4,216.....On-campus interviews









7,956.....Students who attended Career Fairs

8,769.....Jobs and internships listed online

10,884...Act!vated! K-Staters

Based on data collected 2012-13

Fall 2013 Highlights

	Fall 2013		Fall 2012
AUCF employers	296		274
AUCF students	3898		4195
Presentations	234		238
To participants	8139		7040
Appointments	1446		1135
Walk ins	730		596
Activations	7966		6846
Corporate Partners	18		17

Backyard BBQ 2013



Dr. Bosco greeting students




Meeting CES staff



Thank You

ConocoPhillips

For sponsoring the annual
Backyard BBQ
Wednesday, August 28, 2013
11 am-1:30 pm
Holt Hall South Lawn

 Career and Employment Services
Center for Career and Employment Services

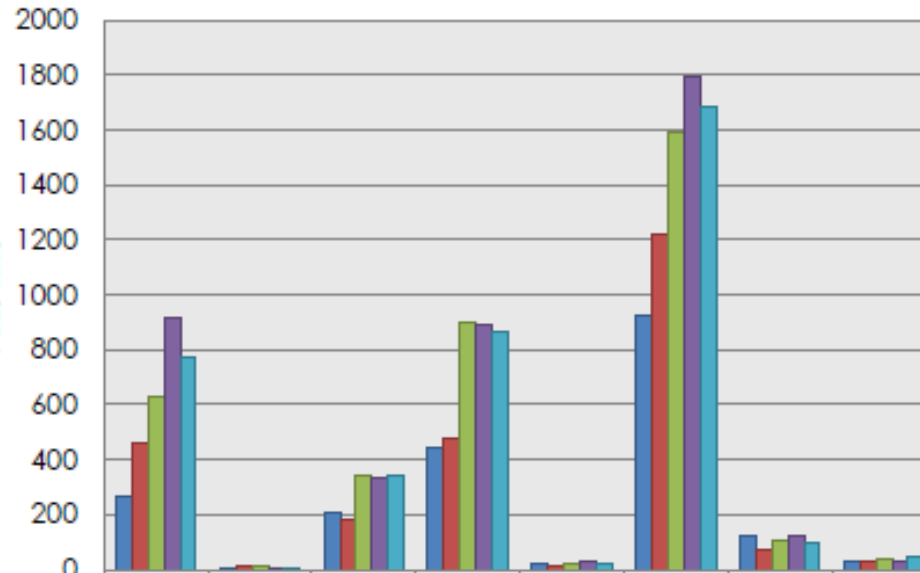


Look who showed up!



2,000+ hot dogs served

All-University Career Fair



	AGRI	ARCH	ARSC	BUAD	EDUC	ENGG	HUEC	TECH
2009	269	3	207	445	18	926	119	31
2010	456	9	178	473	14	1221	75	33
2011	632	15	341	898	18	1592	106	35
2012	915	8	332	888	27	1791	122	30
2013	772	8	344	868	19	1688	94	43



All-University Career Fair



Kerri Day Keller

@K_D_Keller

Follow

Love these new VIP tours at #AUCF!
pic.twitter.com/zRJgij5IQP

Reply Retweet Favorite More



Spring 2014

Agri-Industry Career Fair – January 29, 2014 (NDI January 30)

Engineering Career Fair – February 11 & 12, 2014 (NDI February 12 & 13)

Business & Hospitality Career Fair – February 26, 2014 (NDI February 27)

Education On-Campus Interviews – March 3, 2014


Design Expo – April 7, 2014




<http://www.k-state.edu/calendar/>

Wildcat Way

Home Live the Wildcat Way Share your Wildcat Way Nominate a Wildcat What is the Wildcat Way



The Wildcat Way: Jim Reed



His dream career makes dreams for others come true.

[learn more >](#)

[Share](#) 276 [Google +](#) 8
[Tweet](#) 98 [Pinterest](#) 7
[ShareThis](#) 684

Class of 2012-13

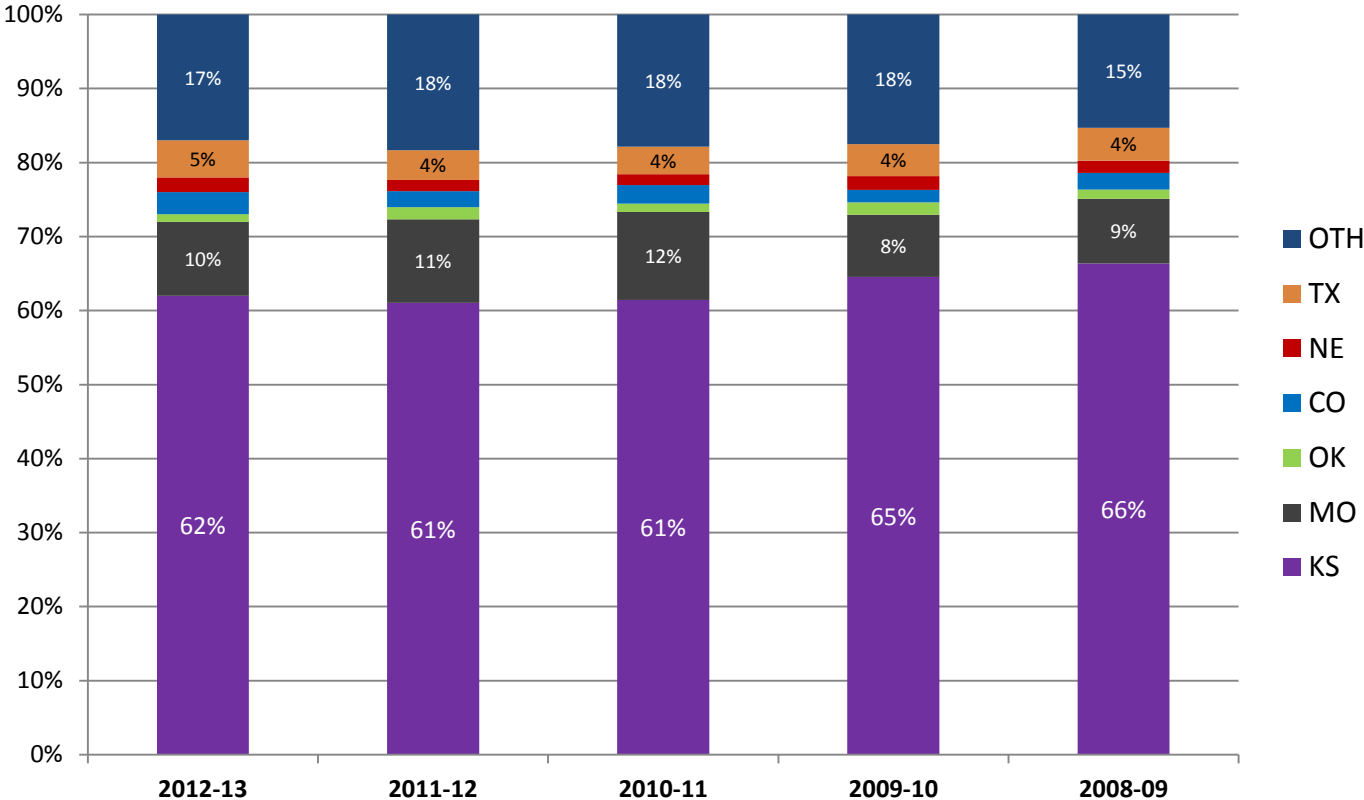
Bachelors Degree Graduates



86% Response Rate (3121/3650)

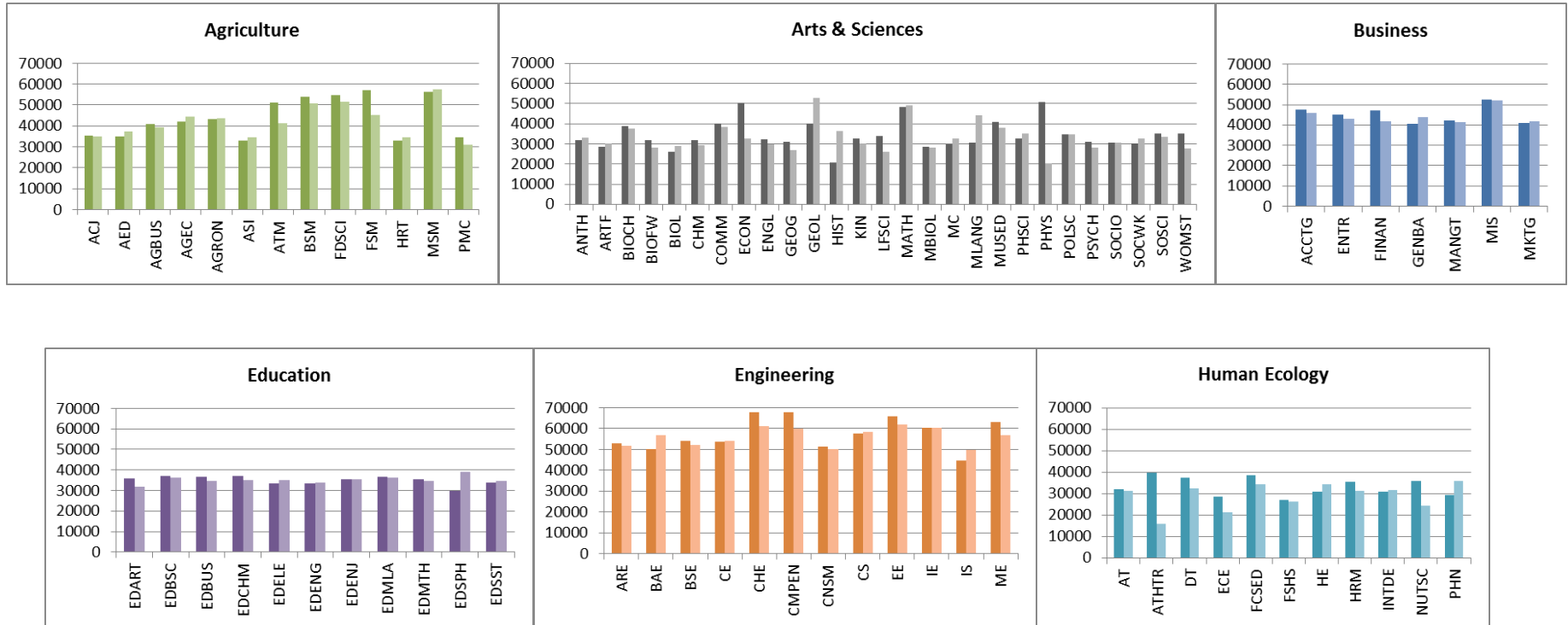
New K-State Graduates

Employed Bachelors



Bachelors Salary Offers

Dark bars=2012-13 Light bars=2011-12



86% Response Rate (3121/3650)

Top Employers 2012-13

Top Corporate Employers

1	CERNER CORPORATION
2	GTM SPORTSWEAR
3	KOCH INDUSTRIES INC & AFFILIATES
4	CARGILL
5	BURNS & MCDONNELL
6	STATE STREET
7	DEERE & COMPANY
8	TARGET
9	FARMERS INSURANCE GROUP
10	BLACK & VEATCH
11	HENDERSON ENGINEERS INC
12	GARMIN INTERNATIONAL
13	ENTERPRISE HOLDINGS
14	PHILLIPS 66
15	HALLIBURTON
16	HORMEL FOODS CORPORATION
17	LEXMARK INTERNATIONAL INC
18	PROFESSIONAL ENGINEERING CONSULTANTS
19	HOSPIRA
20	AGCO CORPORATION
21	CONOCOPHILLIPS
22	NETWORKS PLUS/CIVICPLUS
23	NORDSTROM
24	HENSEL PHELPS CONSTRUCTION CO
25	ERNST & YOUNG

Top Schools

1	GEARY COUNTY USD 475
2	MANHATTAN-OGDEN USD 383
3	BLUE VALLEY USD 229
4	WICHITA USD 259
5	TOPEKA PUBLIC SCHOOLS USD 501
6	EMPORIA USD 253
7	OLATHE PUBLIC SCHOOLS USD 233
8	SALINA USD 305
9	GREAT BEND USD 428
10	DODGE CITY USD 443

Top Nonprofits

1	SAINT FRANCIS COMMUNITY SERVICES
2	VIA CHRISTI HEALTH
3	TEACH FOR AMERICA
4	BIG LAKES DEVELOPMENTAL CENTER INC
5	MEADOWLARK HILLS
6	KVC HEALTH SYSTEMS INC / KVC BEHAVIORAL HEALTHCARE
7	YMCA
8	RILEY COUNTY POLICE DEPARTMENT
9	STATE OF KANSAS

Based on bachelor degree hires only

Thanks Corporate Partners!



BUILDING AMERICA®



STATE STREET.



FARMERS



perceptivesoftware



Featured Presentation



Ed Koc, Director of Research, NACE

Student Attitudes and Expectations: Class of 2013

Future dates to note

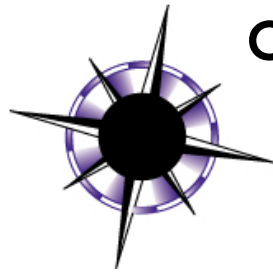
Summer 2014

- CES Employer Advisory Board Meeting – July 18, 2014

Fall 2014

- Part-Time Opportunities Career Fair – August 28, 2014
- All University Career Fair – September 23 & 24, 2014 (NDI September 24 & 25)
- On-Campus Interviews – Beginning October 1, 2014





Career and Employment Services

Guiding You from College to Career

Kansas State University



<http://www.k-state.edu/ces/conference/employeradvisoryboard.html>

Thank you!