

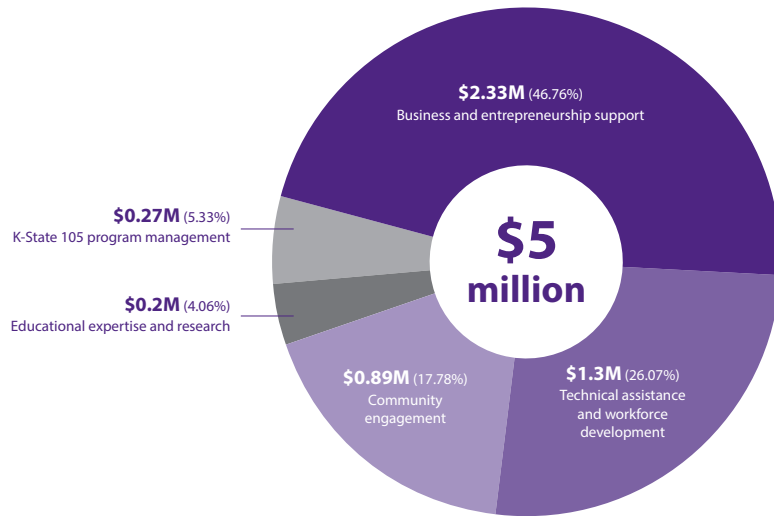
# K-State 105

Economic growth for all 105 Kansas counties

A QUICK LOOK AT FISCAL YEAR 2024

**9 OUT OF 10 K-STATE 105 DOLLARS**  
have been invested in Kansas communities

## FISCAL YEAR 2024 FUNDING



**\$5 MILLION**

in fiscal year 2024 funding

**\$5.5+ MILLION**

in additional matching funds

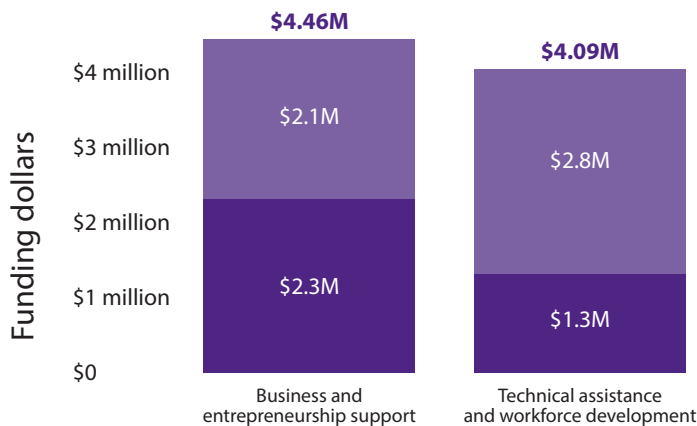
**\$10.5 MILLION**

total invested in economic growth for Kansas communities in fiscal year 2024

**MORE THAN 94%**

of K-State 105 funding has supported economic growth for communities in Kansas

## MATCHING FUNDS FOR K-STATE 105 PROJECTS



K-State 105 partners statewide generated more than **\$5.5 million in additional matching funds — more than doubling the initial state investment** in K-State 105 for fiscal year 2024. This bar graph highlights the funding distribution across four key project areas.

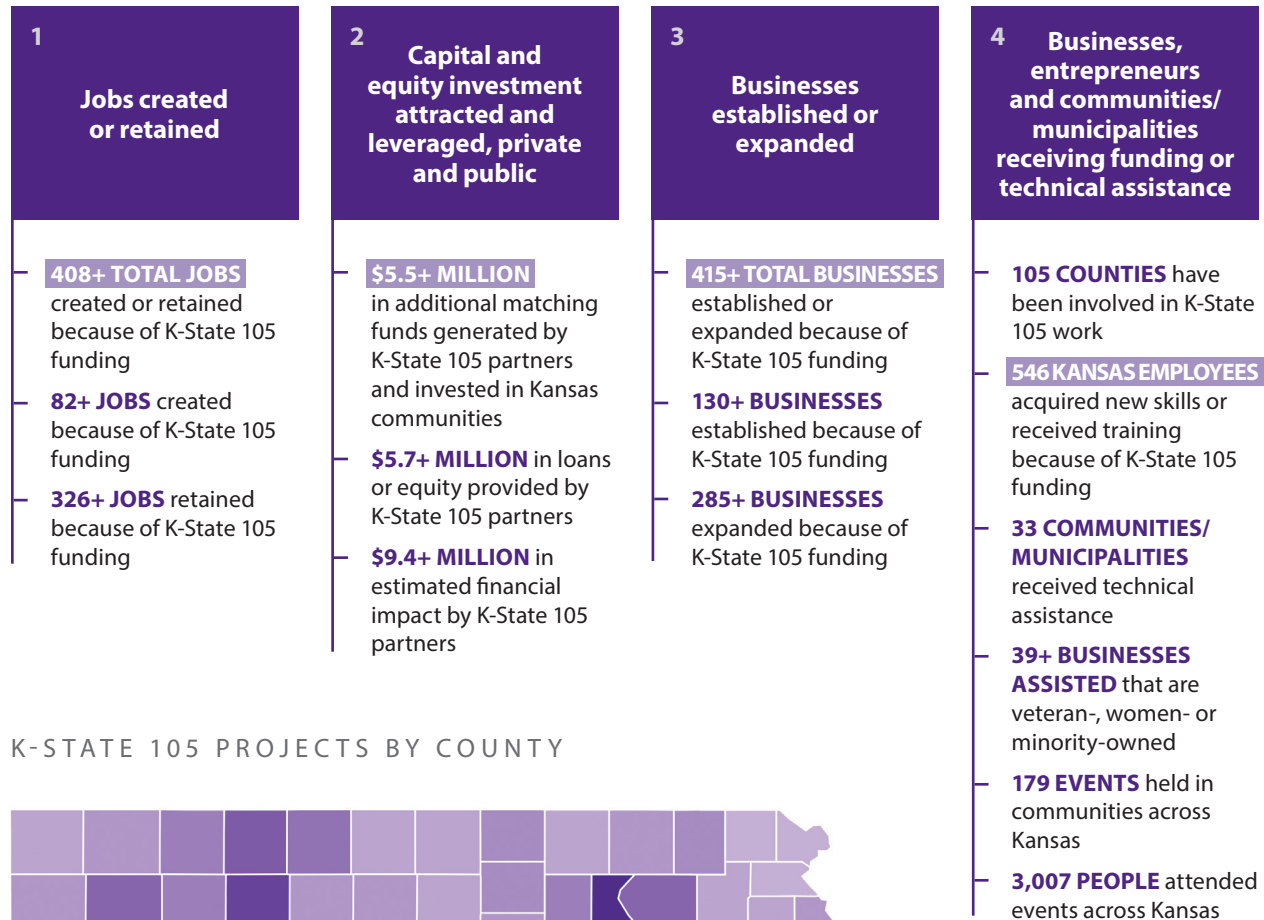
Project category

■ K-State 105 funding ■ Matching funds

# Successes from our first year

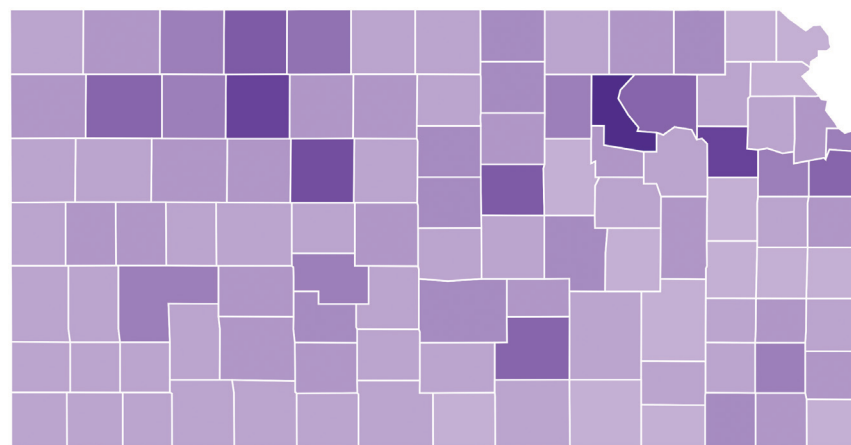
K-State 105 is a university model for statewide economic success. Our work is guided by a set of meaningful metrics that are consistent with factors known to facilitate economic growth.

Take a closer look at our fiscal year 2024 progress, which covers July 1, 2023, through June 30, 2024. Through collaborative work with our partners, we achieved great success in a short amount of time.



Fiscal year 2024 data is based on the surveys that were completed by K-State 105 partners.

## K-STATE 105 PROJECTS BY COUNTY



Number of projects in each county  
1 - 3 - 6 - 9 - 12

The work of K-State 105 has engaged with all 105 counties of Kansas. This map shows the amount of work in each county.



### LEARN MORE

Explore an interactive data dashboard and read K-State 105 stories. [k-state.edu/105/fiscal-year-2024](https://k-state.edu/105/fiscal-year-2024)