



October 2021

Student Voting Rates for Kansas State University

2020 NSLVE Campus Report

October 2021

Dear Colleagues:

We are pleased to send this tailored report containing your students' voting rates for 2020. This report contains three years of relevant topline data: 2016, 2018, and 2020. As always, we disaggregate the data so you can better identify and address gaps in participation.

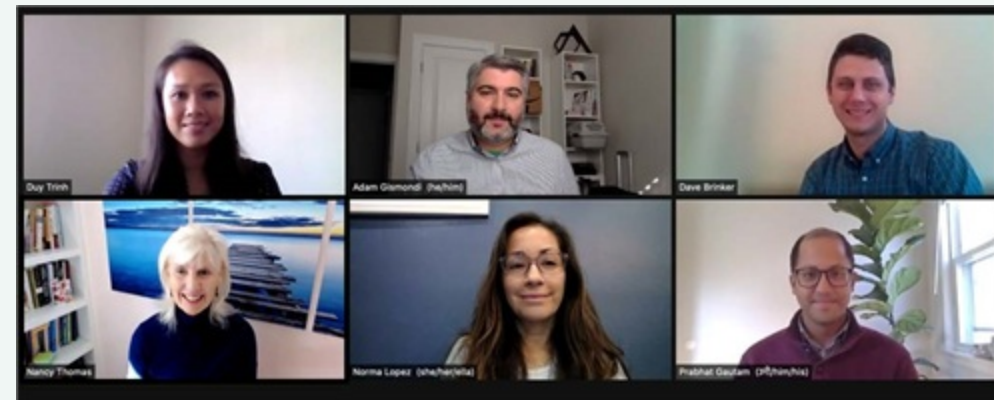
College and university students participated in record-breaking numbers in the 2020 election. In 2016, the Average Institutional Voting Rate was 53%. This year, it jumped to 66%. We encourage you to review Democracy Counts 2020, our most recent national report.

As in past years, we urge you to share this report widely and strategically, particularly with faculty who, in 2020, were often the most consistent communicators with students about ever-changing voting conditions and deadlines. We also urge you to review our recommendations for engaging elections to cultivate a robust and healthy campus climate for political engagement, discourse, equity, and participation: Election Imperatives (2019) and the more recent Election Imperatives: A Time of Physical Distancing and Social Action. Since "pervasive political discussions" and attentiveness to the campus culture around speech and academic freedom are among our top recommendations, we direct you to our discussion guides on talking about your NSLVE report, on free speech and inclusion, and on hot topics, our Making Sense of ... guides.

Finally, we always encourage you to work with us. Help us help you get better data by reaching out. Email IDHE@Tufts.edu for more information. And as always, watch your inbox for our periodic newsletter, IDHE Update, for announcements about upcoming releases and new resources.

Congratulations on engaging your students in the 2020 election. Remember, student political learning is a year-round objective. Elections may be episodic, but student political engagement should not be.

All the Best,
IDHE Team



(Top Row from left) Duy Trinh, Program Administrator; Adam Gismondi, Director of Impact; Dave Brinker, Senior Researcher; (Bottom Row from left) Nancy Thomas, Director; Norma López, Postdoctoral Scholar; Prabhat Gautam, Data Manager.

We also want to acknowledge and thank **Syed Golam Mohaimen, M.S. student in Data Science at Tufts University** for his contributions toward the creation of these reports.

In This Report

This report presents data on student voter participation rates for your campus. The topline counts on page 5 tells you how many students voted, but we encourage you to look carefully at the data on subsequent pages to learn who voted. Data are presented in the form of vessel charts, overlapping donut charts, and tables.

	2014			2018			2014-2018 Change (p.p.)
	Enrolled	Voted	Rate (%)	Enrolled	Voted	Rate (%)	
Asian	-	-	-	-	-	-	-
American Indian/ Alaska Native	-	-	-	-	-	-	-
Black	-	-	-	-	-	-	-
Hispanic	-	-	-	-	-	-	-

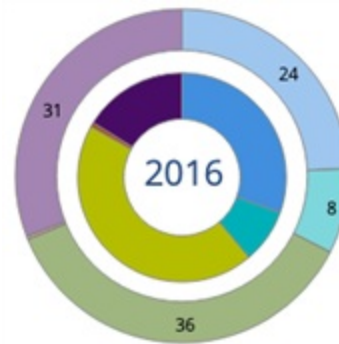
Tables

The tables show, on the left-side columns, the numbers of students and the rates from 2016, 2018, and 2020. On the left-side, percentage point (p.p.) changes between 2016 and 2020. A red down arrow indicates a decrease, a green up arrow indicates an increase, and a yellow arrow pointing to the right indicates no change. "-" in these tables indicates that the data is unavailable/missing, or is available for 10 or less students.



Vessel Chart

This chart shows rates out of 100%, with arrows to the right of each bar representing relevant national averages (medians), which you can find in IDHE's national report Democracy Counts 2020.



Overlapping Donut Chart

This chart is used to show the breakdown of vote method utilization (page 10), with the outer ring showing your campus method utilization and the inner ring showing the national breakdown. These are described in percentages.

Voting, Registration and Yield Rates

YOUR INSTITUTION

67.3%

2020 Voting Rate

+22.6

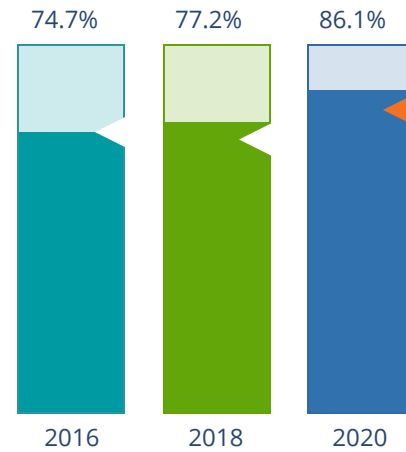
Change From 2016

ALL INSTITUTIONS

66%

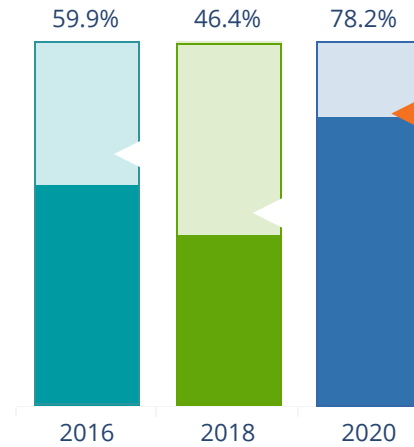
2020 Voting Rate

REGISTRATION RATE



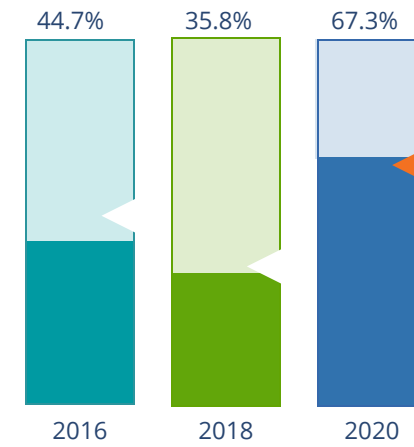
The **Registration Rate** is the percent of your voting-eligible students who registered to vote.

VOTING RATE OF REGISTERED STUDENTS



The **Voting Rate of Registered Students** is the percent of registered students who voted on Election Day. We often refer to this as the “yield” rate.

VOTING RATE



The **Voting Rate** is the percentage of eligible students who voted on Election Day. The voting rate is also the product of the registration and yield rates.

Looking Closer

Voting and Registration Rates

	2016	2018	2020	2016-2020 Change (p.p.)
Total Student Enrollment	22,607	21,296	20,637	↓ -1,970
(Age under 18/Unknown)	-	-	-	-
(NSC reported non-resident aliens)	1,879	1,582	1,148	↓ -731
(FERPA records blocked)	28	19	23	↓ -5
(Non-Degree Seeking Students)	-	-	210	-
Total eligible voters	20,699	19,695	19,255	↓ -1,444
Number of students who registered	15,461	15,195	16,575	↑ 1,114
Number of students who voted	9,258	7,051	12,959	↑ 3,701
Registration Rate %	75	77	86	↑ 11
Voting Rate of Registered Students %	60	46	78	↑ 18
Voting Rate %	45	36	67	↑ 23

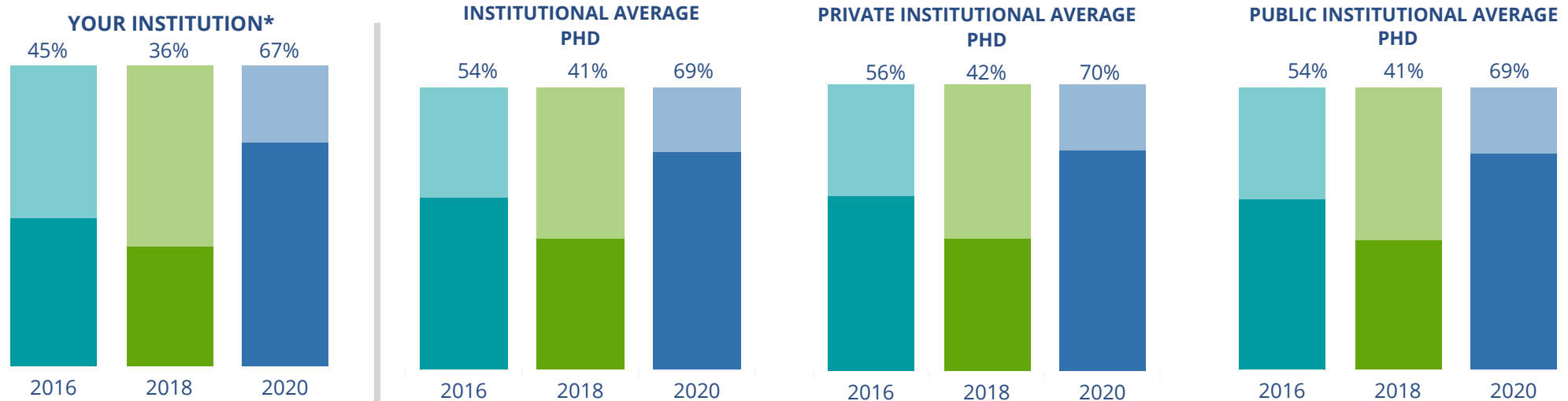
This page provides the numbers we used to calculate your voting, registration, and yield rates. The sub-categories under total student enrollment are the adjustments that we make to account for students who are ineligible to vote due to age or citizenship status. We also exclude, when correctly flagged, students who are not pursuing degrees.

We have removed non-resident aliens (international students) based on your institution's enrollment submission to the National Student Clearinghouse. This is indicated by "NSC reported non-resident aliens" on this page.

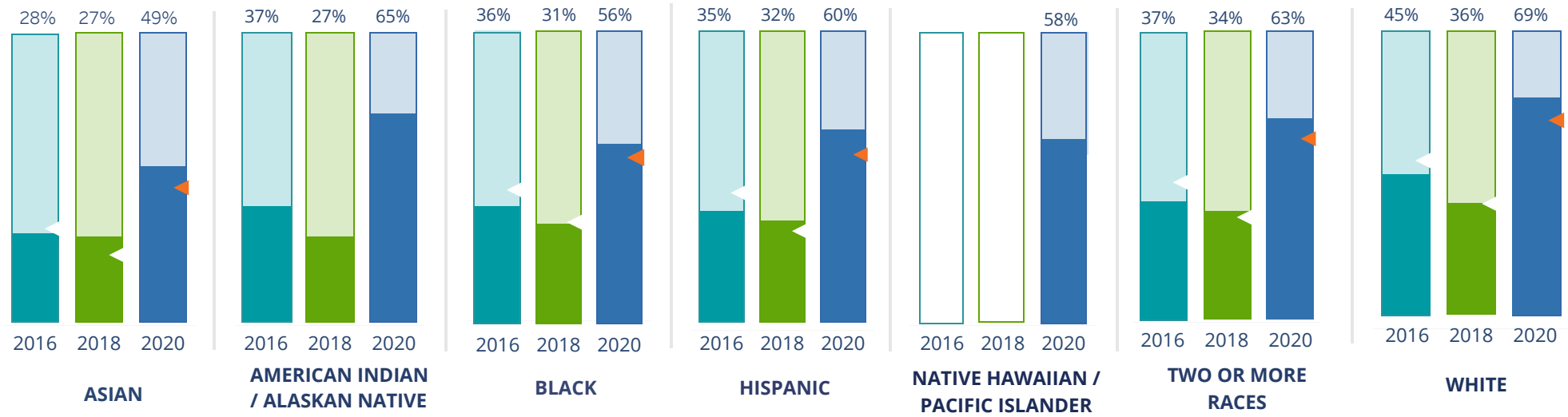
By Institution Types



These are estimated voting rates of your institution compared to the average voting rates of similar institutions in NSLVE. *"Your Institution" chart is presented at a different scale.



By Race / Ethnicity



These are estimated voting rates for race / ethnicity groups. These classifications are provided by campuses and are obtained following race reporting procedures* defined by the National Center for Education Statistics of the Institute of Education Sciences (IES). Please see our FAQ for more detail on why we cannot report national benchmark for some of the demographic groups:

<https://tufts.app.box.com/v/idhe-nslve-report-faq>

If you notice unavailable/missing data in this page, it could mean any of the following for your institution: (i) does not report this data; (ii) did not provide this data in past years; (iii) does not separately submit data for one or more of the demographic groups, or (iv) the data is reported for 10 or fewer students.

* <https://nces.ed.gov/ipeds/report-your-data/race-ethnicity-collecting-data-for-reporting-purposes>

Looking Closer

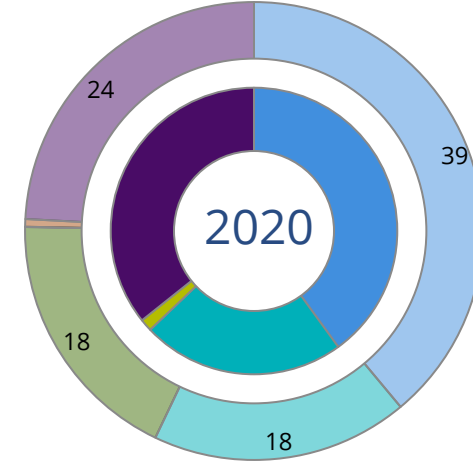
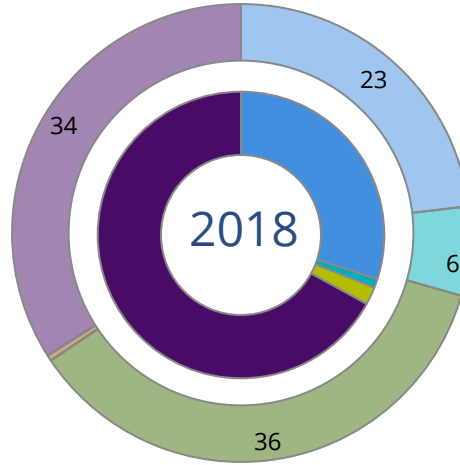
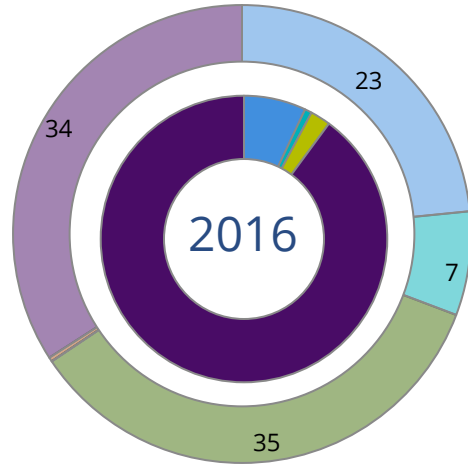
By Race/Ethnicity

This page provides the numbers we used to calculate race / ethnicity group voting rates. We include the counts of students and the change in rates between the two most recent comparable election years. If you notice unavailable/missing data in this page, it could mean any of the following for your institution: (i) does not report this data; (ii) did not provide this data in past years; (iii) does not separately submit data for one or more of the demographic groups, or (iv) the data is reported for 10 or fewer students.

	2016			2018			2020			2016-2020 Change (p.p)
	Enrolled	Voted	Rate	Enrolled	Voted	Rate	Enrolled	Voted	Rate	
Asian	372	103	28	395	106	27	383	186	49	↑ 21
American Indian/ Alaska Native	104	38	37	93	25	27	89	58	65	↑ 29
Black	822	299	36	686	213	31	619	346	56	↑ 20
Hispanic	1,472	512	35	1,520	483	32	1,502	902	60	↑ 25
Native Hawaiian/ Pacific Islander	32	-	-	21	-	-	19	11	58	-
2 or More Races	739	276	37	737	251	34	727	461	63	↑ 26
White	17,535	7,861	45	16,485	5,852	35	15,673	10,826	69	↑ 24
Race Unknown	1,498	163	11	1,337	117	9	243	169	70	↑ 59

By Voting Method

■ Not-In-Person
 ■ Early Vote
 ■ In-Person
 ■ Other
 ■ Provisional
 ■ Unknown



	2016		2018		2020		2016-2020	
	Voted	Rate	Voted	Rate	Voted	Rate	Change (p.p.)	
Early Vote	70	1	72	1	2,965	23	22	↑
In-Person on Election Day	213	2	142	2	177	1	-1	↓
Not-In-Person	644	7	2,114	30	5,179	40	33	↑
Other	-	-	-	-	-	-	-	
Provisional	-	-	-	-	-	-	-	
Voting Method Unknown	8,328	90	4,721	67	4,637	36	-54	↓

These are estimated rates for vote method utilization, the number of students utilizing each method, and the percent of students utilizing each method. Not all U.S. states provide information on vote method; voting method for voter files from these states are classified "Voting Method Unknown." For a list of these states, see our FAQ. <https://idhe.tufts.edu/nslve/nslve-faq#CampusReports>

By Age Group

	2016	2018	2020
18-21	39%	30%	68%
22-24	39%	34%	65%
25-29	41%	33%	64%
30-39	45%	40%	63%
40-49	61%	59%	74%
50+	77%	72%	84%

Voting is habit-forming and young voters will usually continue as voters in subsequent elections.

Also, young voters are more likely to be contacted by campaigns and are visible, and therefore significant, to elected officials. While in the past, we have seen voting rates increase across age groups, in recent cycles, the most significant increases have been among first-time and the youngest voters. Some colleges serve primarily young students, traditionally viewed as students in the 18-21 or 22-24 categories here. Others have much higher numbers of enrolled older undergraduate or graduate students.

Looking Closer

By Age Group

Here, we provide the numbers of students in each age category and the voting rates for each group. These are based on the student's age on the day of the election, as calculated by the National Student Clearinghouse using data from student enrollment records.

	2016			2018			2020			2016-2020	
	Enrolled	Voted	Rate	Enrolled	Voted	Rate	Enrolled	Voted	Rate	Change (p.p)	
18-21	12,996	5,125	39	12,273	3,699	30	11,444	7,828	68	↑ 29	
22-24	4,825	1,894	39	4,507	1,515	34	3,848	2,482	65	↑ 25	
25-29	2,222	913	41	2,101	693	33	1,667	1,062	64	↑ 23	
30-39	1,657	746	45	1,576	627	40	1,374	872	63	↑ 18	
40-49	583	357	61	552	327	59	603	447	74	↑ 13	
50+	291	223	77	265	190	72	319	268	84	↑ 7	

Looking Closer

By Sex

	2016			2018			2020			2016-2020
	Enrolled	Voted	Rate	Enrolled	Voted	Rate	Enrolled	Voted	Rate	Change (p.p)
Female	-	-	-	-	-	-	-	-	-	-
Male	-	-	-	-	-	-	-	-	-	-

These are estimated voting rates for sex groups and the numbers we used to calculate their voting rates. These classifications are provided by campuses and are obtained following the reporting procedures defined by the National Center for Education Statistics (NCES) of the Institute of Education Sciences (IES). Presently, NCES requires institutions to report students as “Male” or “Female” only.*

If you notice missing data in this page, it could mean any of the following for your institution: (i) does not report this data; (ii) did not provide this data in past years; (iii) does not separately submit data for one or more of the demographic groups, or (iv) the data is reported for 10 or fewer students.

*<https://surveys.nces.ed.gov/ipeds/public/survey-materials/faq?faqid=11>

Looking Closer

By Education Level / Undergraduate Class Year

	2016			2018			2020			2016-2020
	Enrolled	Voted	Rate (%)	Enrolled	Voted	Rate (%)	Enrolled	Voted	Rate (%)	Change (p.p)
EDUCATION LEVEL										
Undergraduate	18,177	7,220	40	16,865	5,290	31	15,370	10,237	67	↑ 27
Graduate	3,954	1,777	45	4,045	1,561	39	3,468	2,422	70	↑ 25
Class Unknown	443	261	59	364	200	55	417	300	72	↑ 13
CLASS YEAR										
First Year	-	-	-	-	-	-	3,352	65	2,193	-
Second Year	-	-	-	-	-	-	3,359	66	2,212	-
Upper Level	-	-	-	-	-	-	9,115	67	6,132	-
ENROLLMENT STATUS										
Full-time	19,533	7,609	39	18,381	5,692	31	16,187	10,918	67	↑ 28
Part-time	3,041	1,649	54	2,893	1,359	47	3,068	2,041	67	↑ 12

These are estimated voting rates by Education Level (undergraduate/graduate), Class Year, and Enrollment Status (full-time/part-time), and the numbers we used to calculate these rates.

If you notice missing data in this page, it could mean any of the following for your institution: (i) does not report this data; (ii) did not provide this data in past years; (iii) does not separately submit data for one or more of the demographic groups, or (iv) the data is reported for 10 or fewer students.

By Field of Study

FIELDS	2016			2018			2020			2016-2020
	Enrolled	Voted	Rate	Enrolled	Voted	Rate	Enrolled	Voted	Rate	Change (p.p)
Architecture	510	207	41	492	142	29	470	308	66	↑ 25
Area, Ethnic, Cultural, and Gender Studies	31	15	48	31	19	61	21	19	90	↑ 42
Biological and Biomedical Sciences	1,057	443	42	1,561	456	29	1,355	922	68	↑ 26
Business, Management, and Marketing	2,031	810	40	1,996	651	33	1,857	1,250	67	↑ 27
Communication and Journalism	635	298	47	538	221	41	426	316	74	↑ 27
Computer and Information Sciences	644	217	34	370	130	35	286	208	73	↑ 39
Education	2,164	1,082	50	2,050	926	45	2,177	1,585	73	↑ 23

These are estimated voting rates by field of study, and the numbers we used to calculate the field of study rates. For an explanation of CIP codes, please see our FAQ.* There are roughly 8,000 fields of study among U.S. colleges and universities, so we provide rates for condensed categories.

*<https://tufts.app.box.com/v/idhe-nslve-report-faq>

By Field of Study

FIELDS	2016			2018			2020			2016-2020 Change (p.p)
	Enrolled	Voted	Rate	Enrolled	Voted	Rate	Enrolled	Voted	Rate	
Engineering and Engineering Technologies	3,388	1,318	39	3,152	987	31	2,534	1,692	67	↑ 28
English Language and Literature	164	83	51	148	78	53	116	93	80	↑ 30
Family and Consumer/Human Sciences	1,275	563	44	772	286	37	636	418	66	↑ 22
Foreign Languages, Literatures, and Lingui..	65	42	65	71	34	48	49	34	69	↑ 5
Health Professions	1,042	514	49	991	348	35	887	585	66	↑ 17
History	136	79	58	115	64	56	111	83	75	↑ 17
Liberal Arts and Sciences, and Humanities	2,018	637	32	2,309	515	22	2,173	1,332	61	↑ 30
Mathematics and Statistics	184	56	30	195	62	32	149	100	67	↑ 37
Multi/Interdisciplinary Studies	248	107	43	627	202	32	891	586	66	↑ 23
Natural Resources and Conservation	101	35	35	123	28	23	109	67	61	↑ 27
Parks, Recreation, Leisure, and Fitness Stu..	752	233	31	105	27	26	71	45	63	↑ 32
Philosophy and Religious Studies	38	13	34	34	22	65	26	16	62	↑ 27
Physical Sciences	349	112	32	327	75	23	174	123	71	↑ 39
Psychology	475	191	40	412	141	34	432	314	73	↑ 32

By Field of Study

FIELDS	2016			2018			2020			2016-2020 Change (p.p)
	Enrolled	Voted	Rate	Enrolled	Voted	Rate	Enrolled	Voted	Rate	
Public Administration and Social Service Professions	255	112	44	213	92	43	181	124	69	↑ 25
Social Sciences	1,086	455	42	926	369	40	665	456	69	↑ 27
Visual and Performing Arts	531	234	44	511	198	39	484	341	70	↑ 26
Unknown	407	244	60	354	195	55	426	302	71	↑ 11

About This Report

Thank you for participating in the National Study of Learning, Voting, and Engagement.

Since NSLVE's launch in 2013, nearly 1,200 colleges and universities have signed up to receive their voting rates for the 2012, 2014, 2016, 2018, and 2020 federal elections.

Along with others, your institution's participation in this study has allowed us to build a robust database of over 50 million college student records, about 10 million for each election year, that serve as a foundation for innovative research on college student political learning and engagement in democracy.

NSLVE is a signature initiative of the Institute for Democracy and Higher Education (IDHE) at Tufts University's Jonathan M. Tisch College of Civic Life. The mission of IDHE is to shift college and university priorities and culture to advance political learning, agency, and equity. We achieve our mission through research, resource development, technical assistance, and advocacy.

About the Data

The voter registration and voting rates in this report reflect the percentage of your institution's students who were eligible to vote and who actually voted in the 2016, 2018, and 2020 elections.

These results are based on enrollment records your institution submitted to the National Student Clearinghouse (NSC) and publicly available voting files collected by L2 Political.

Enrollment lists are adjusted by deducting students under age 18 (at the time of the election), people identified as non-degree seeking and those identified by campuses as "nonresident aliens" (NRAs) (the federal government's category for mostly international students). Unfortunately, not all campuses report NRAs to NSC. For those campuses, we use IPEDS to calculate the number of NRA students on each campus and adjust NSC enrollment numbers to estimate the number of students to remove. We also quality check NRA removals by verifying that there is little to no discrepancy between the number of international students reported by the campus to IPEDS and to NSC. We cannot adjust subgroup analyses absent identification of NRAs verified by the process above. We welcome closer partnerships with individual colleges and universities to provide more accurate rates. For more on the data and the matching process, see our FAQ on Campus Reports.

Kansas State University

Thank you for the work you do to improve your students' political learning and engagement. We hope that you find your NSLVE report useful. For up-to-date news on NSLVE data, resources, and to sign up for our newsletter visit: <https://idhe.tufts.edu>.

References: IDHE encourages report recipients to share this report as broadly as possible, including posting it on the college or university's website. When doing so, please use the following citation: Institute for Democracy & Higher Education: National Study of Learning, Voting and Engagement. (2021). 2016, 2018, and 2020 report for _____ [name of institution]. Medford, MA.



Barnum Hall
163 Packard Ave.
Medford, MA 02155

tischcollege@tufts.edu
617.627.3453



Institute for Democracy & Higher Education:
National Study of Learning, Voting, and Engagement
Barnum Hall, Medford, MA 02155

Follow Us on Twitter: @TuftsIDHE
NSLVE@tufts.edu
617.627.0620