

Organizational Restructuring Phase 2

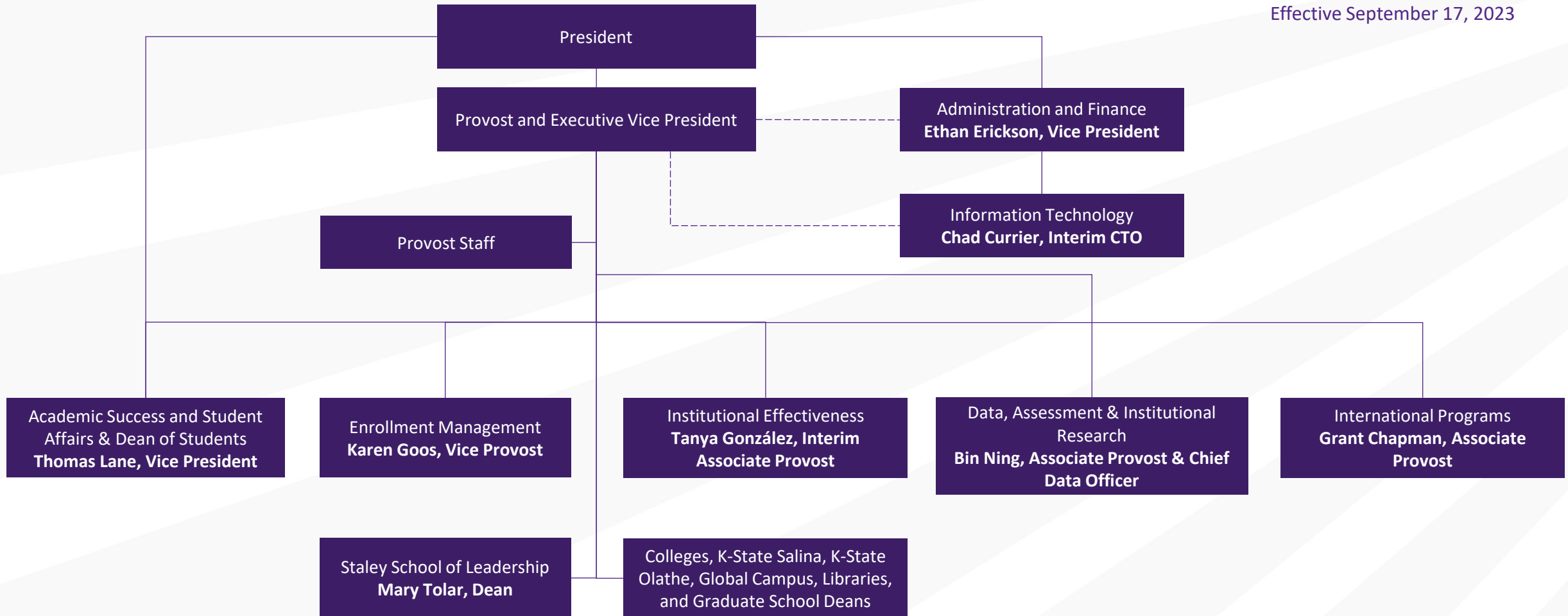


SEM Operational Excellence Charts

August 2023

New SEM Organizational Structure: Provost's View

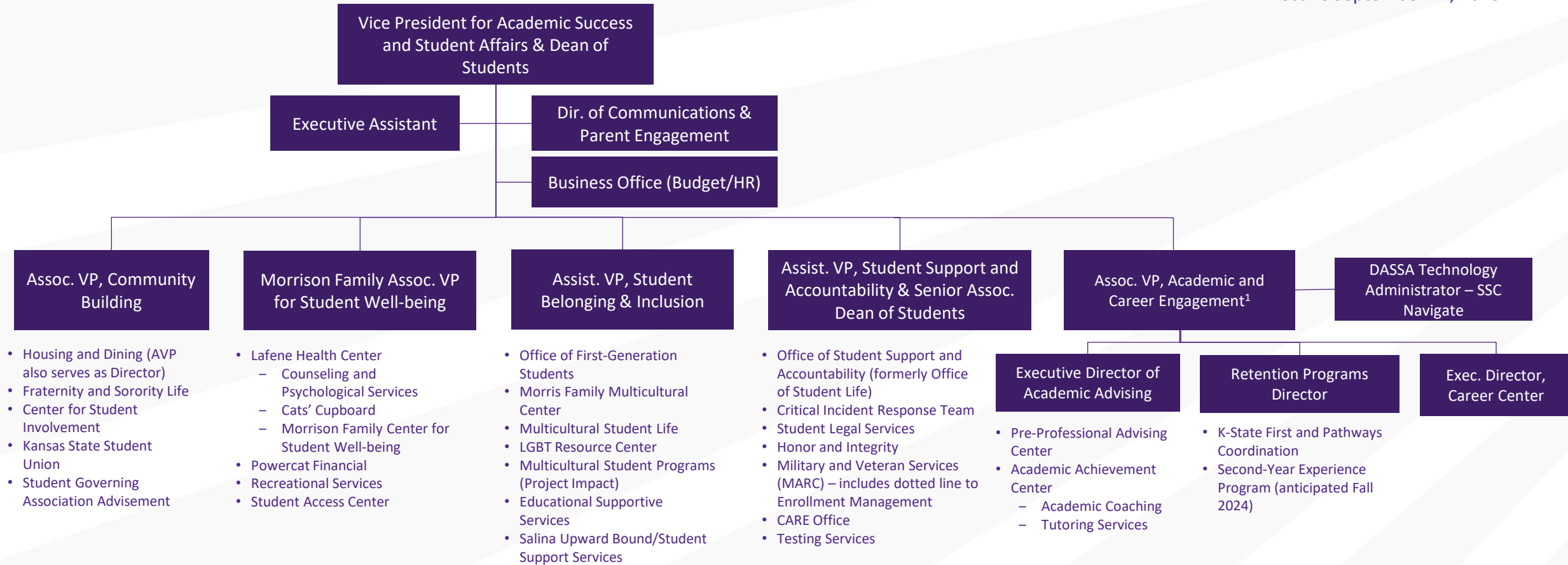
Effective September 17, 2023



Division of Academic Success & Student Affairs Structure and Functions



Effective September 17, 2023



Organizational Changes: Staley School of Leadership and Office of Diversity, Equity, Inclusion, and Belonging

Effective August 6, 2023

